

40-201

A PLANNED UNIT DEVELOPMENT IN CYPRESS LAKES
CYPRESS LAKES-PLAT NO. 4
SECTION 14, TOWNSHIP 43 SOUTH, RANGE 42 EAST
PALM BEACH COUNTY, FLORIDA
IN 2 SHEETS SHEET NO. 2

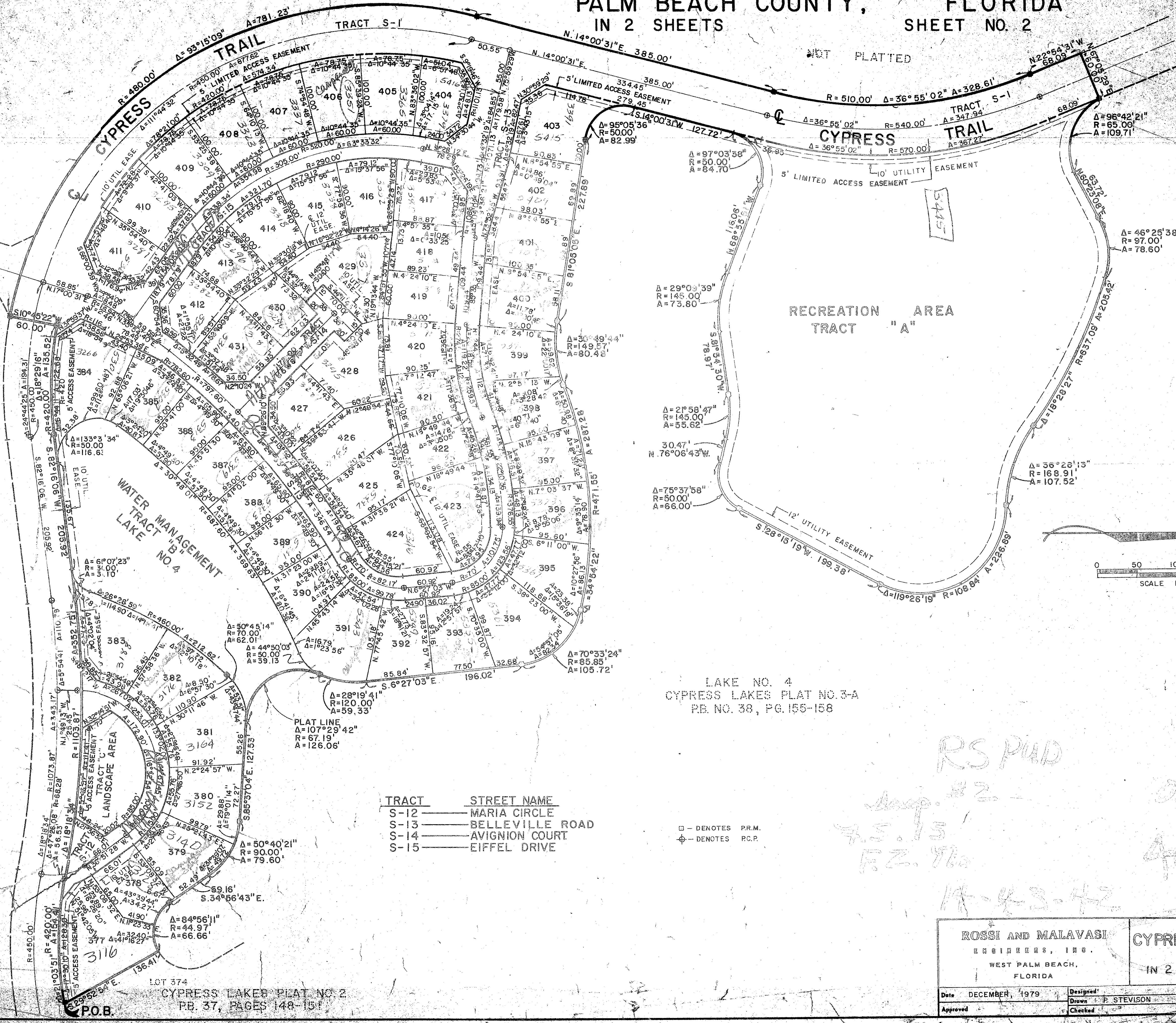
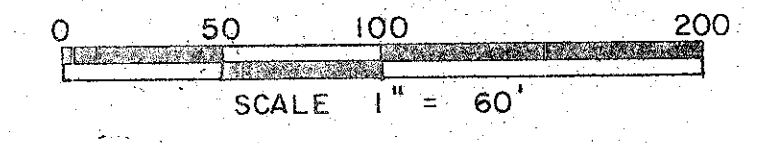
NOT PLATTED

NOT PLATTED

STATE OF FLORIDA
COUNTY OF PALM BEACH
This Plat was filed for record on _____ M
this _____ day of _____
19____ and duly recorded in Plat Book No. _____
on page _____
JOHN B. DUNKLE, Clerk, Circuit Court
By _____ D. C.

CYPRESS LAKES
PLAT NO. 3-A
P.B. NO. 38, PG. 155-158

LAKE NO. 4
CYPRESS LAKES PLAT NO. 3-A
P.B. NO. 38, PG. 155-158



TRACT	STREET NAME
S-12	MARIA CIRCLE
S-13	BELLEVILLE ROAD
S-14	AVIGNON COURT
S-15	EIFFEL DRIVE

○ - DENOTES P.R.M.
⊕ - DENOTES R.C.P.

Handwritten notes:
RS PUD
Aug. #2
7.5.13
F.Z. The
11-4-83-42
0234-301
40/20

ROSSI AND MALAVASI ENGINEERS, INC. WEST PALM BEACH, FLORIDA		CYPRESS LAKES PLAT IN 2 SHEET SHEET NO. 2	
Date	DECEMBER, 1979	Designed	P. STEVISON
Drawn	P. STEVISON	Checked	
Approved		Scale	1" = 60'
		File No.	2520-79

LOT 374
CYPRESS LAKES PLAT NO. 2
P.B. 37, PAGES 148-151
P.O.B.